

Freeman Group Ltd FIVE-RIB Cladding

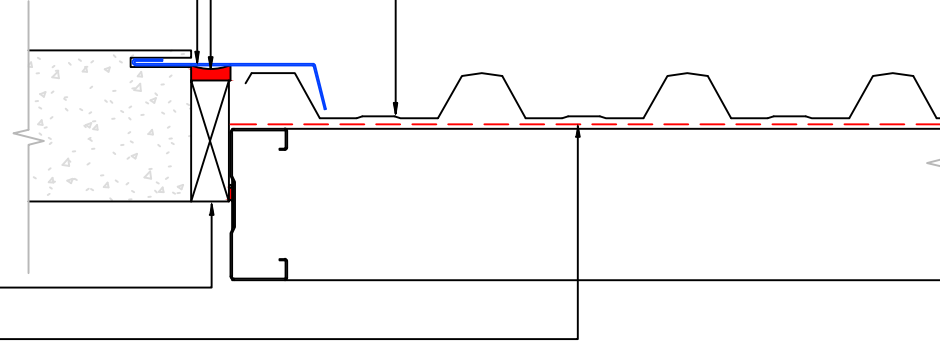
Sealant

Parallel junction flashing to match FIVE-RIB material

Timber spacer

Building wrap

EXTERIOR



FIVE-RIB material	
0.55mm	Colorsteel® Endura
0.55mm	Colorsteel® Maxx
0.55mm	Zinalume

Notes:

These details are required to be fixed to allow thermal movement .
 Foam closure is required in high wind region to mitigate driving rain migration.
 Foam closure is required to protect from vermin and avian damage.