

MULTI-RIB material	
0.55mm	Colorsteel® Endura
0.55mm	Colorsteel® Maxx
0.55mm	Zincalume

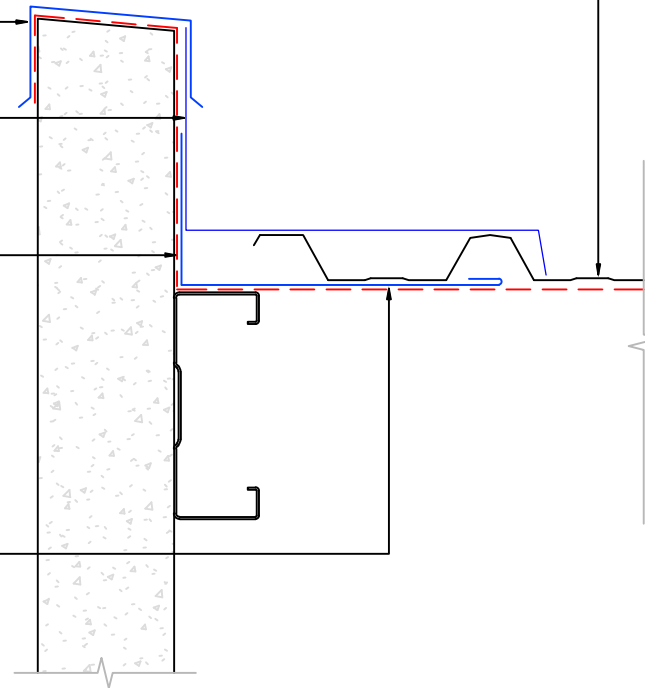
Freeman Group Ltd MULTI-RIB
Long Run Roofing

Metal capping

Side Apron flashing with chase to
match MULTI-RIB material

Vapour barrier/ Roofing Underlay
to underside cladding

Dry pan flashing to match
MULTI-RIB material



Notes:

These details are required to be fixed to allow thermal movement .
Foam closure is required in high wind region to mitigate driving rain migration.
Foam closure is required to protect from vermin and avian damage.